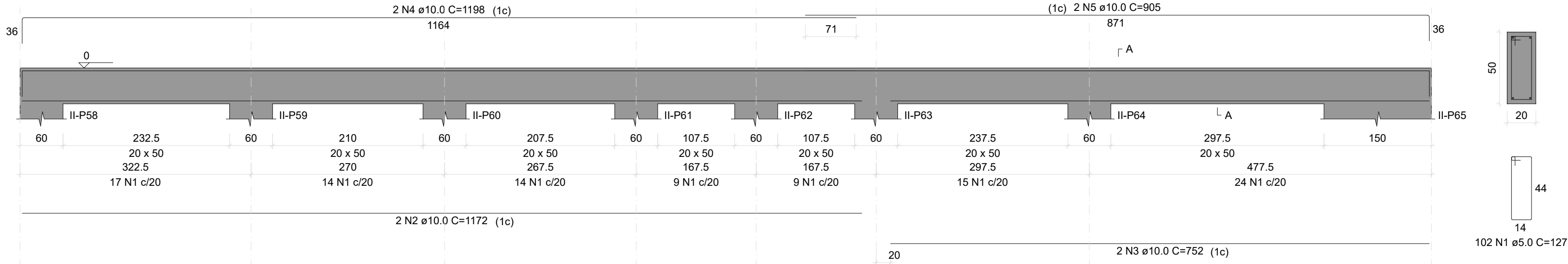
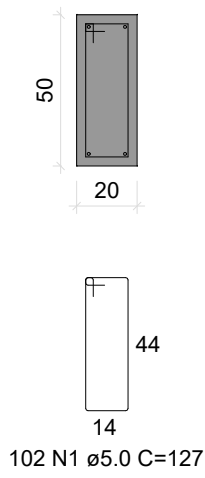


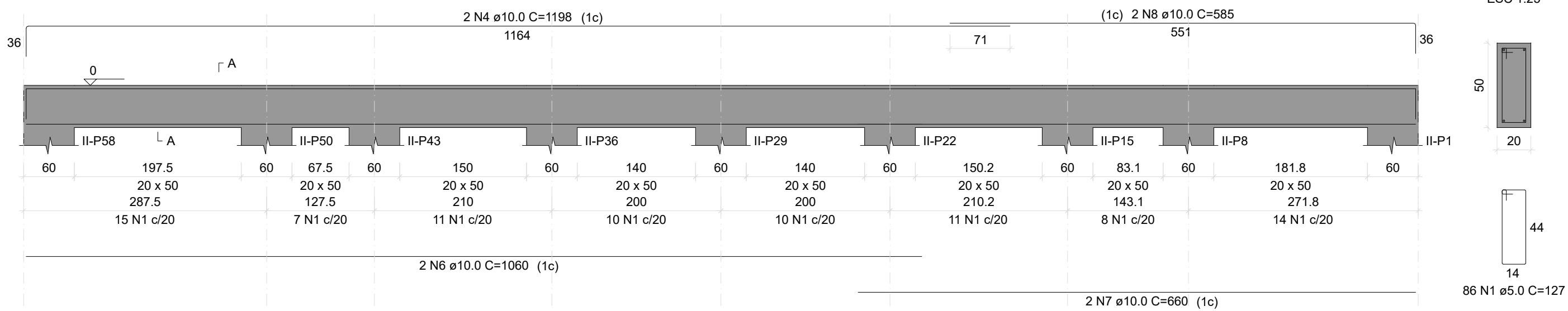
II-V11  
ESC 1:50



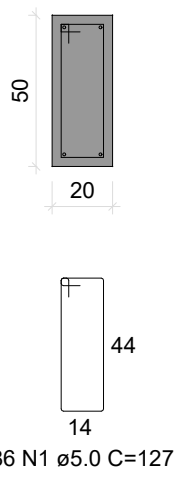
SEÇÃO A-A  
ESC 1:25



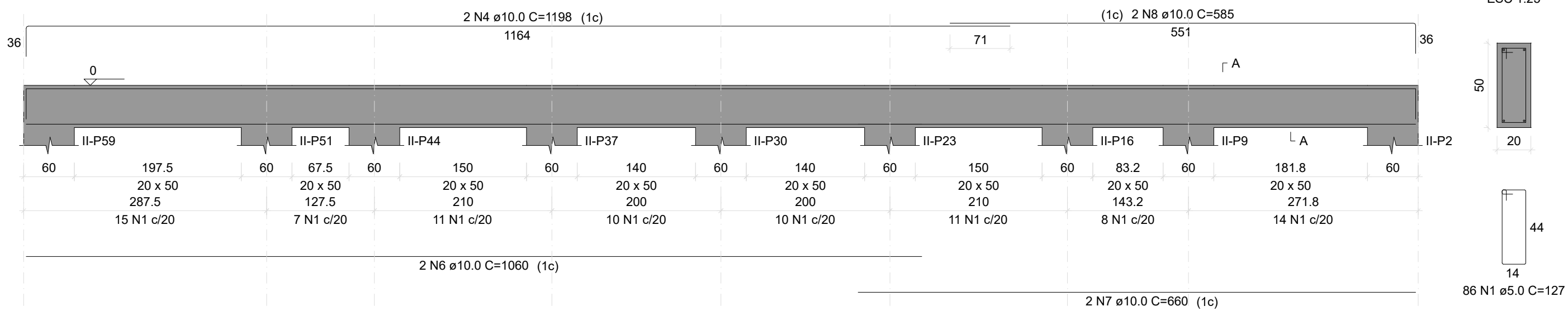
II-V12  
ESC 1:50



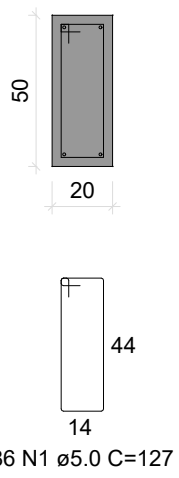
SEÇÃO A-A  
ESC 1:25



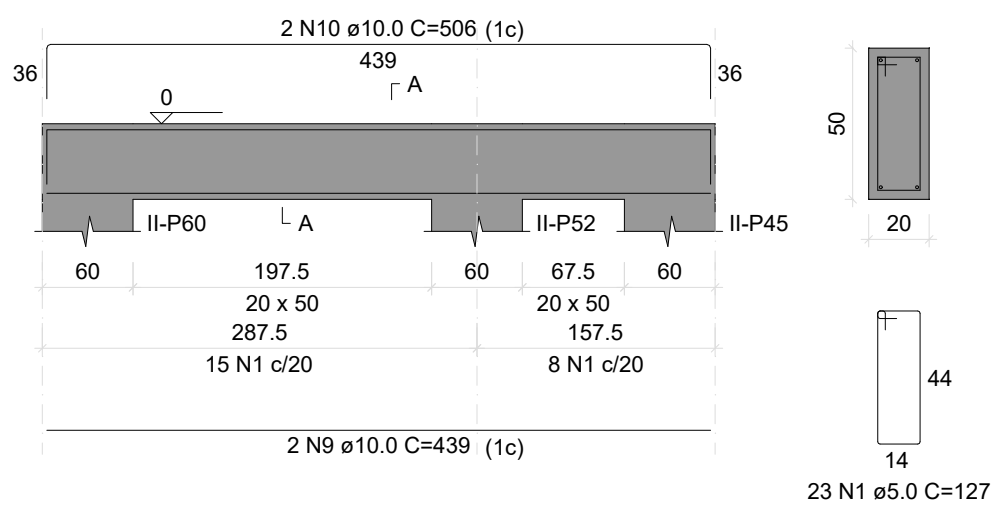
II-V13  
ESC 1:50



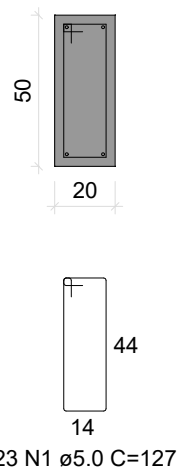
SEÇÃO A-A  
ESC 1:25



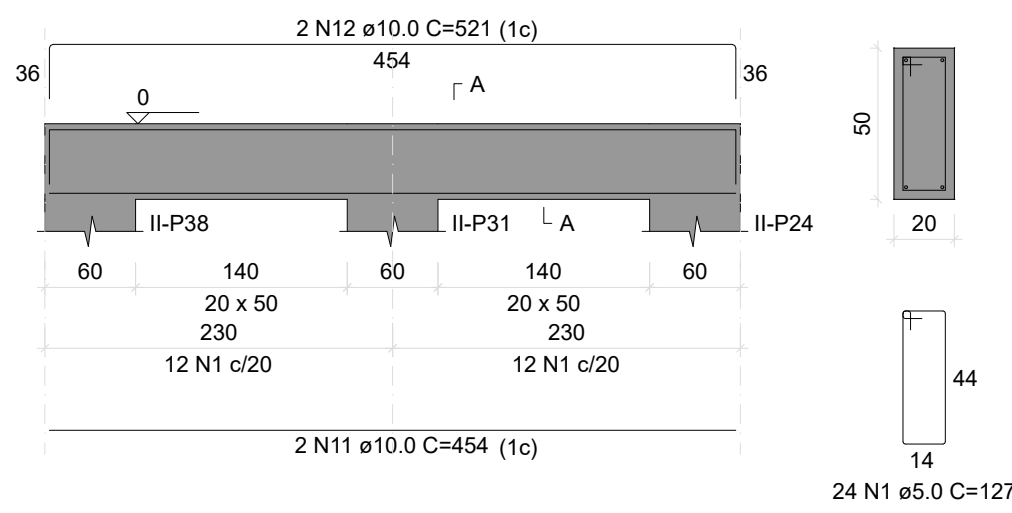
II-V14  
ESC 1:50



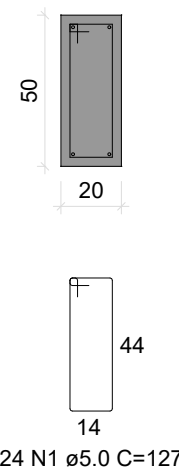
SEÇÃO A-A  
ESC 1:25



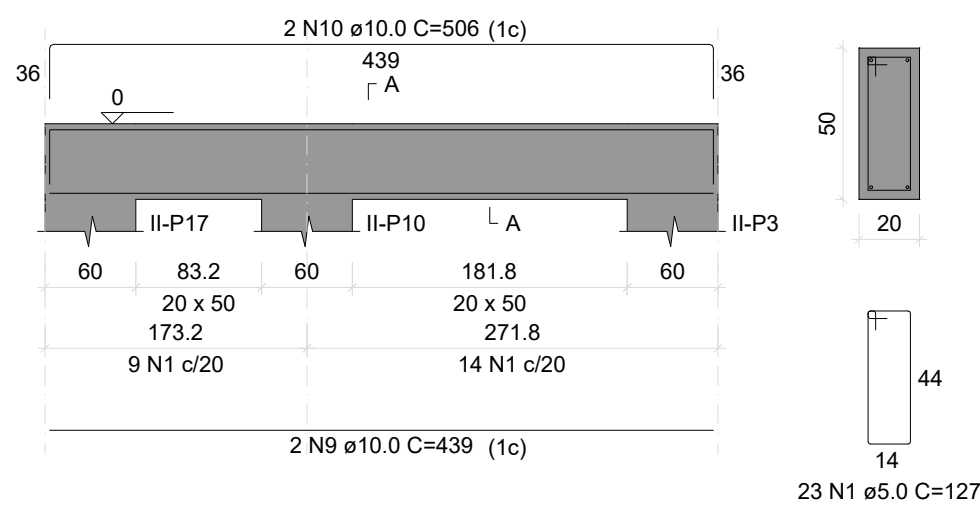
II-V15  
ESC 1:50



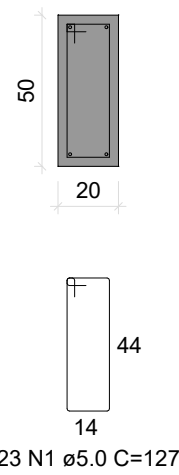
SEÇÃO A-A  
ESC 1:25



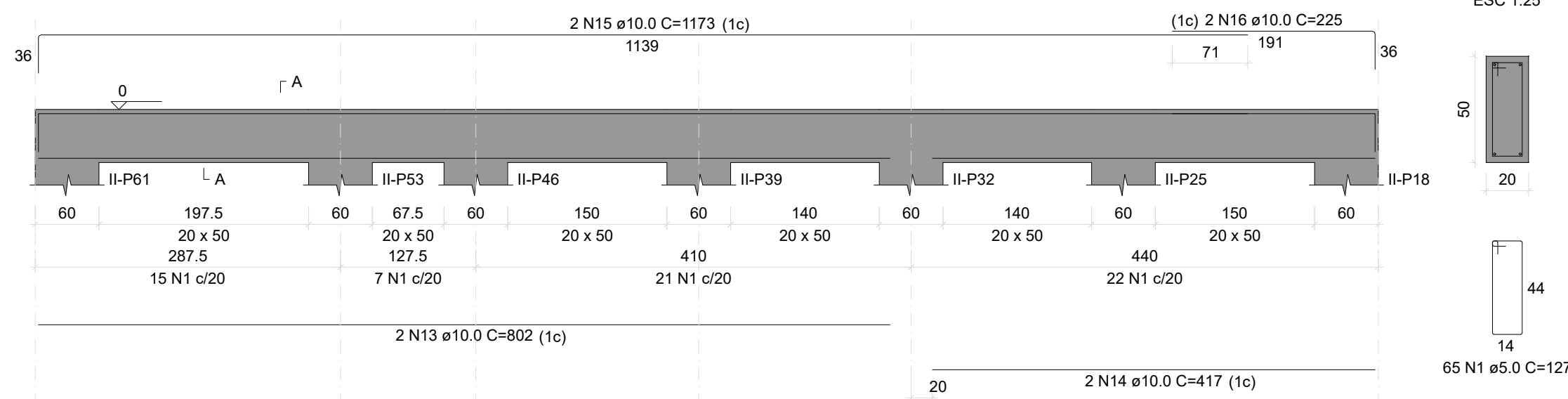
II-V16  
ESC 1:50



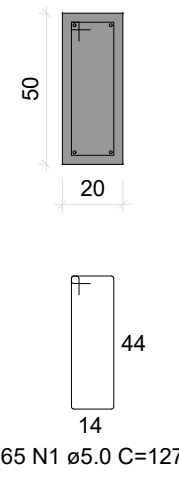
SEÇÃO A-A  
ESC 1:25



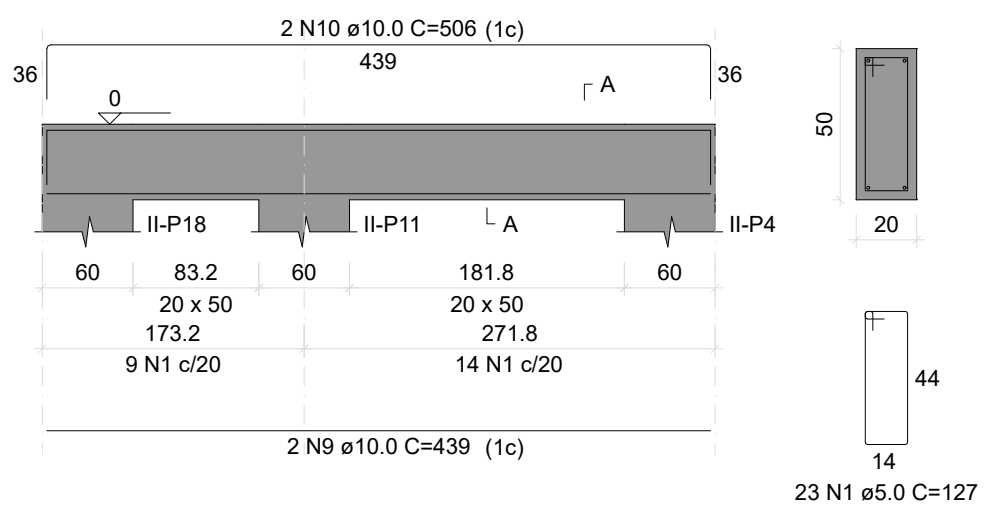
II-V17  
ESC 1:50



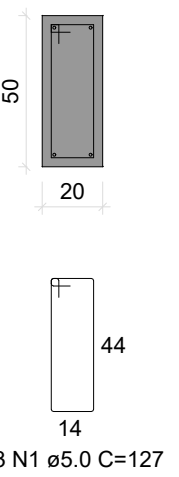
SEÇÃO A-A  
ESC 1:25



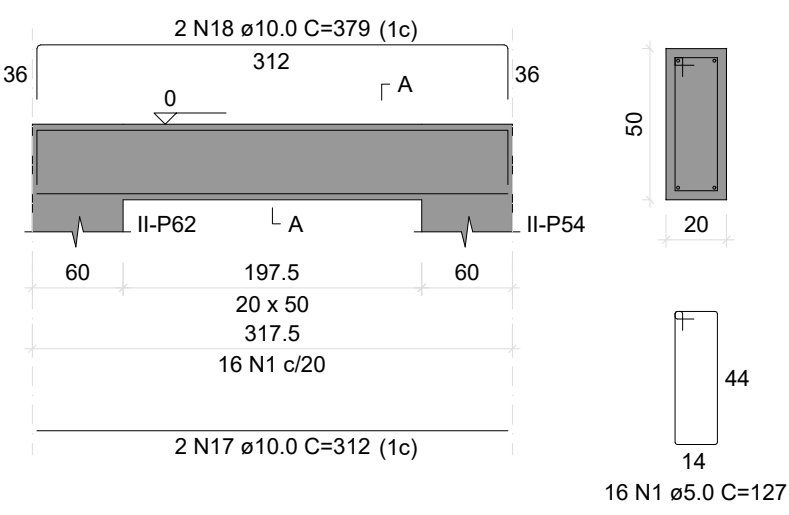
II-V18  
ESC 1:50



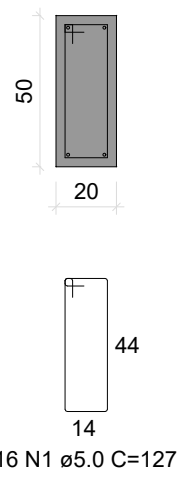
SEÇÃO A-A  
ESC 1:25



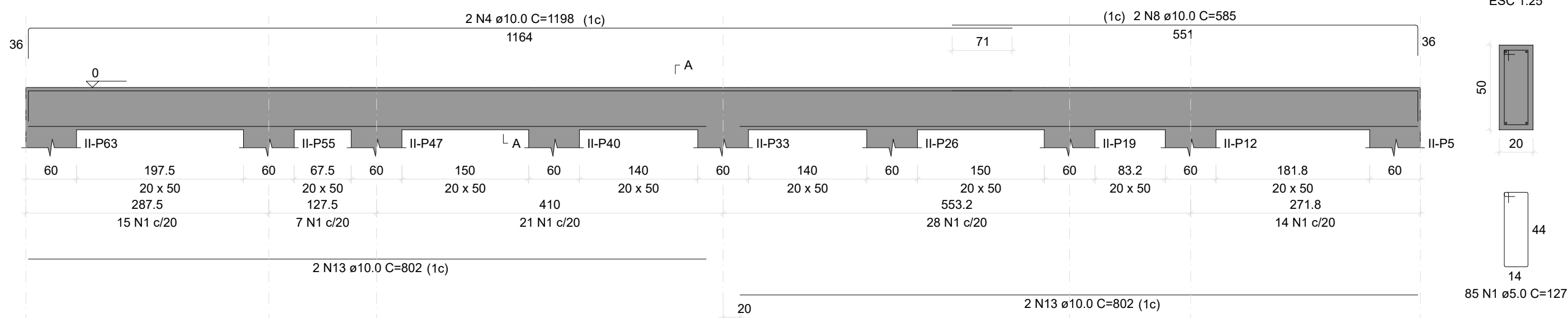
II-V19  
ESC 1:50



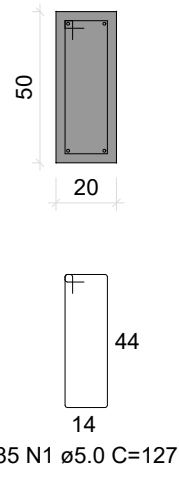
SEÇÃO A-A  
ESC 1:25



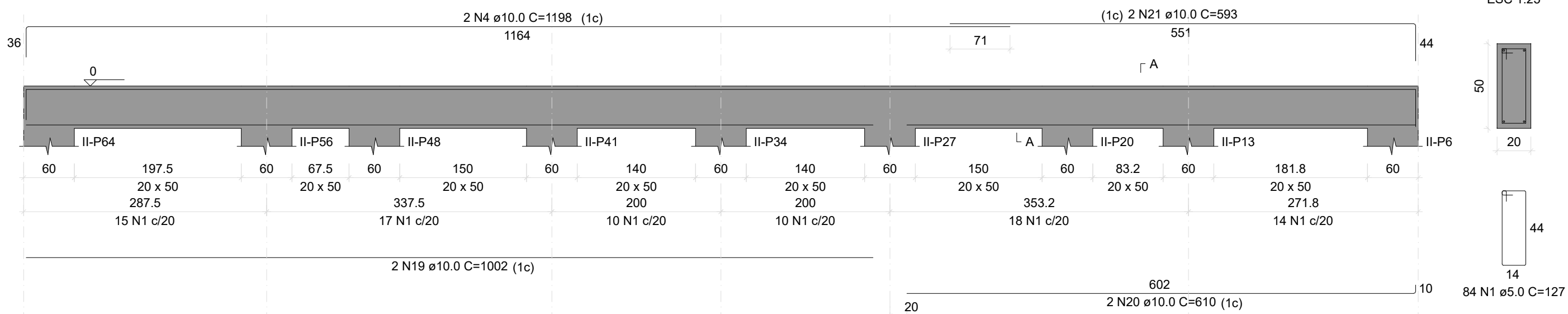
II-V20  
ESC 1:50



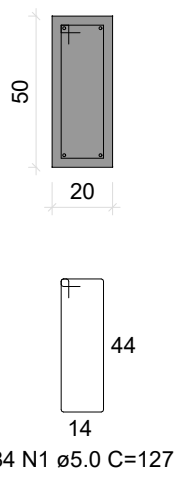
SEÇÃO A-A  
ESC 1:25



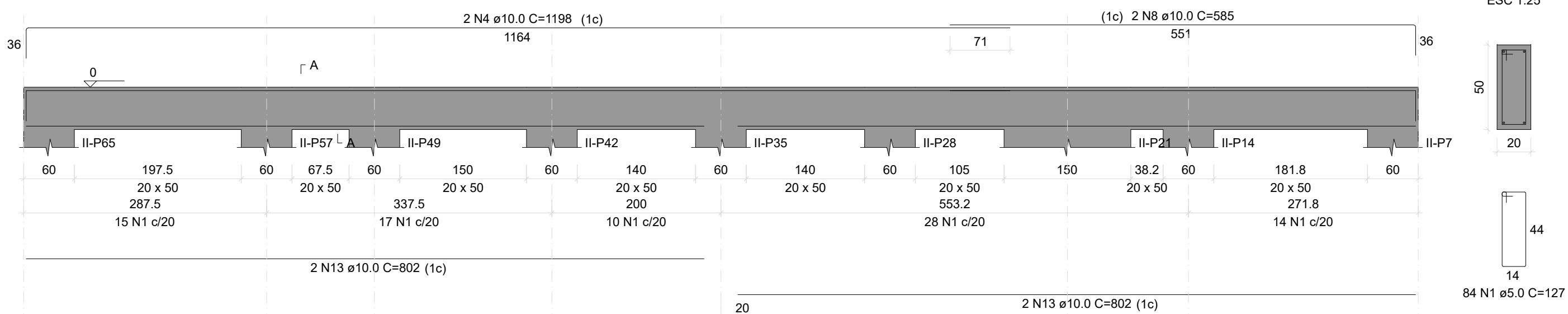
II-V21  
ESC 1:50



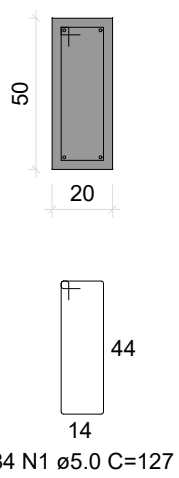
SEÇÃO A-A  
ESC 1:25



II-V22  
ESC 1:50



SEÇÃO A-A  
ESC 1:25



RELAÇÃO DO AÇO

AÇO	N	DIAM (mm)	QUANT	C UNIT (cm)	C TOTAL (cm)
II-V11	II-V12	II-V13	II-V14	II-V15	II-V16
II-V17	II-V18	II-V19	II-V20	II-V21	II-V22
CA60	1	5.0	701	127	89027
CA50	2	10.0	2	1172	2344
	3	10.0	2	752	1504
	4	10.0	12	1198	14376
	5	10.0	2	905	1810
	6	10.0	4	1060	4240
	7	10.0	4	660	2640
	8	10.0	8	585	4680
	9	10.0	6	439	2634
	10	10.0	6	506	3036
	11	10.0	2	454	908
	12	10.0	2	521	1042
	13	10.0	10	802	8020
	14	10.0	2	417	834
	15	10.0	2	1173	2346
	16	10.0	2	225	450
	17	10.0	2	312	624
	18	10.0	2	379	758
	19	10.0	2	1002	2004
	20	10.0	2	610	1220
	21	10.0	2	593	1186

RESUMO DO AÇO

AÇO	DIAM (mm)	C.TOTAL (m)	PESO + 10% (kg)
CA50	10.0	566.6	384.2
CA60	5.0	890.3	150.9
PESO TOTAL (kg)			
CA50		384.2	
CA60		150.9	

Volume de concreto (C-25) = 8.98 m³  
Área de forma = 107.73 m²



TODAS AS MEDIDAS E NÍVEIS DEVERÃO SER CONFERIDOS NO LOCAL.			
R003			
R002			
R001			
REVISÃO	ALTERAÇÕES	EMIÇÃO	RESPONSÁVEL

UNIDADE DE SAÚDE QUINTA DO PORTAL

				<b>PREFEITURA MUNICIPAL DE PORTO ALEGRE</b> SECRETARIA MUNICIPAL DE OBRAS E INFRAESTRUTURA DIRETORIA DE PROJETOS E OBRAS VIÁRIAS			
RESPONSÁVEIS TÉCNICOS PROJETO DE ARQUITETURA: <b>JULIANO FABRO</b> ARQUITETO E URBANISTA CAU.A22875-3   ID. FUNC.: 1609270		PROJETO DE ARQUITETURA: <b>LUIZ PRESTES</b> ARQUITETO E URBANISTA CAU.A23531-8   ID. FUNC.: 270122		PROJETO EXECUTIVO ESTRUTURAL: <b>AMANDA DA CUNHA FIGUEIRA</b> ENGENHEIRA CIVIL CREA.RS193.391   ID. FUNC.: 1606638		COORDENADOR <b>CÉSAR FABRÍCIO BREDA</b> DESENHO <b>AMANDA</b>	
OBRA <b>US QUINTA DO PORTAL</b>				ÁREA 672.53 m²			
ENDEREÇO <b>ESTRADA AFONSO LOURENÇO MARIANTE, Nº 5547 - LOMBA DO PINHEIRO</b>				MUNICÍPIO <b>PORTO ALEGRE/RS</b>			
PROJETO <b>EXECUTIVO ESTRUTURAL</b>		ASSUNTO <b>VIGAS DE FUNDAÇÃO - 02 SETOR SII</b>		Nº PRANCHIA <b>PE29</b>			
ESCALA INDICADA		DATA ABRIL/2024					
NOME ARQUIVO USQP-2024-EST-PEE.dwg							